

PROFI[®]
BUS

PROFI[®]
NET

CANopen

Ether**CAT**[®]

DeviceNet

Ether**Net/IP**[™]

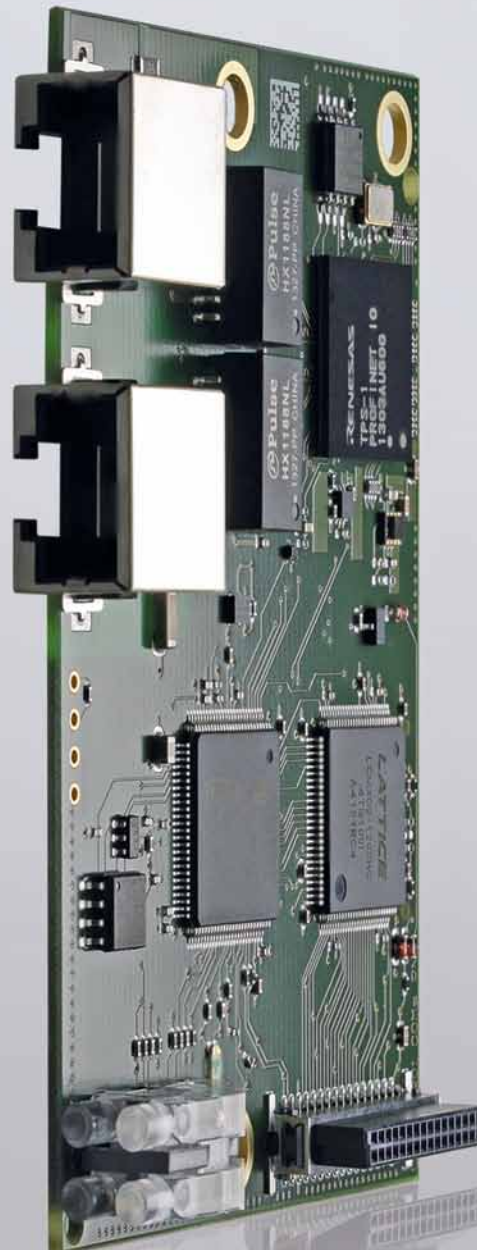
ETHERNET
POWERLINK

CC-Link

sercos
the automation bus

Modbus

SERIAL



KUNBUS-COM

Embedded Communication Modules

KUNBUS
industrial communication

KUNBUS-COM COMMUNICATION MODULES

FOR POWERFUL AUTOMATION DEVICES

The high-performance KUNBUS-COM Slave communication modules offer you a simple and cost-saving option to integrate fieldbuses or Industrial Ethernet networks into your device without internal, time-consuming development effort.

In addition to the fieldbus or Industrial Ethernet interface, the KUNBUS-COM modules also include a 32 pin plug-in connector as an interface to your application. Data exchange between the module and your device takes place via a dual-port RAM interface. Alternatively, a shift register interface is available.

The CPU of the module and the CPU of the control board simultaneously access the shared memory. The KUNBUS-COM modules will be connected to your

controller's processor via UART or SPI interface. The shift register interface is used for devices without processors. Up to 32 byte output and input signals can be processed. The signals can be arbitrarily distributed across the input and output register (e.g. 5 x input and 27 x output).

A second serial interface allows the connection of a terminal and serves, for example, as a configuration and debug interface. As can be seen in the graphic, the interfaces to the controller and the fieldbus

area are galvanically isolated from one another up to 1.5 kV. The KUNBUS-COM modules work completely independently from the controller and therefore do not burden its processor.

All KUNBUS-COM modules are interchangeable thanks to uniform hardware and software interfaces. The KUNBUS-COM modules are certified by the respective user organizations and undergo an extensive function test upon completion.

HIGHLIGHTS

- › Certified Slave modules with low power consumption
- › Interchangeable interfaces supporting all major industrial networks
- › Freely configurable via a terminal and Modbus RTU
- › Customized versions available
- › Optional script interpreter for programming serial protocols

TECHNICAL DATA

Power supply	3.3 V	Mechanical shock load	15 G
Application connector	SMC connector 32-pin	Permanent mechanical stress	5 G
Application interface	Dual-Port-RAM (1 kB) SSC shift register SPI Slave mode UART (Modbus RTU)	Operating temperature	0 °C to 60 °C optional: -25 °C to 65 °C
Debug interface (CDI)	UART	Storage temperature	-40 °C to 85 °C
Size (L x W x H)	ca. 85 x 65 x 15 mm	Humidity (40 °C)	95 % (non-condensing)
Weight	ca. 30 g	Galvanic isolation	up to 1.5 kV

Manufacturer:

KUNBUS GmbH | Heerweg 15C | 73770 Denkendorf | Germany | Tel: +49-711/30020 678 | Fax: +49-711/30020 677 | info@kunbus.com | www.kunbus.com